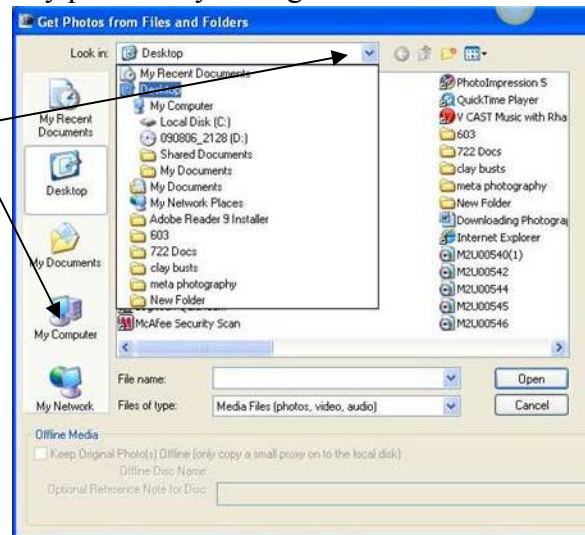


Uploading Photos to Adobe Photoshop

Directions:

1. First you need to upload your photos into Adobe Photoshop. Double click on the Adobe Photoshop icon (a camera).
2. In the first dialog box press “View and Organize”. Once Adobe Photoshop opens, you may see photos in the organizer that are not yours. Go to edit, select all and press delete on your keyboard. This will get rid of any unnecessary photos in your organizer.
3. Go to File, Get Photos, From File or Folders.
4. Click on the down arrow at the top of the dialog box. Click on my computer. Click on your account. Click ONCE on your folder to highlight it. Select “get photos” on your far right.
5. Your files should now be transferred into Adobe Photoshop. You are ready to edit!!!



Bringing Photos into the Editor to Edit

Directions:

1. Highlight the photos you want to edit in your organizer.
2. Click on the Edit button. Go to Full edit.

